



PARK PLACE

AT LAKELINE

72 EXCLUSIVE TOWNHOMES
DESIGNED FOR TIMELESS URBAN LIVING.





THE ART OF CRAFTING SEVENTY-TWO PERSONALIZED HOMES, BUT ONLY ONE THOUGHTFULLY MADE FOR YOU. WELCOME TO PARK PLACE, WE ARE HONORED TO BE A PART OF YOUR JOURNEY AND WANT TO HELP YOU ALONG THE WAY.

THE NEIGHBORHOOD



1. 1890 Ranch

Gold's Gym
Cinemark Cedar Park
Via 313 Pizza
Amy's Ice Cream
Jack Allen's Kitchen
Hopdoddy Burger Bar
Salata

Crumbl Cookies
Target
Academy
Hobby Lobby
PetSmart
Natural Grocers
& More!

2. The Grove
3. Torchy's Tacos
4. H.E.B
5. Whitestone Brewery
6. Cedar Park Rec Center
7. Avery Ranch Golf Club
8. Twin Lakes Park
9. Twin Lakes Family YMCA
10. H.E.B
11. L.A. Fitness
12. Lakeline Park
13. Alamo Drafthouse Lakeline
14. Lakeline Mall
15. Sprouts Farmer's Market
16. Milburn Park
17. Interstellar BBQ
18. PinBallz Arcade
19. Cabo Bob's
20. Miraval Austin Resort & Spa
21. Volente Beach
22. Lake Travis Zipline Adventures
23. The Oasis
24. Marshall Ford Marina
25. St. David's Medical Center
26. Whole Foods

27. The Domain

Alo
Apple
Lucchese
Lululemon
Madewell
Kendra Scott
H&M
Anthropologie
Neiman Marcus
Nordstrom
Nike
Indochino
Restoration Hardware
Cava

North Italia
Punch Bowl Social
Fleming's Steakhouse
Perry's Steakhouse & Grille
True Food Kitchen
Blue Sushi Sake Grill
Cluinary Dropout
Houndstooth Coffee
Picole
The Dirdie Birdie
Pure Barre
SpaSway
Velvet Taco
& More!

28. Top Golf
29. Q2 Stadium
30. Austin Beerworks
31. Gateway Shopping Center
32. Trader Joe's
33. The Arboretum

PARKSIDE AMENITIES

Park Place at Lakeline allows quick access to the newly built Lakeline Park. Spanning nearly 200 acres, the park features a multitude of amenities including soccer fields, baseball fields, playgrounds, pickle ball courts, kayak launches, and more - all minutes from your front door.





PARK PLACE

AT LAKELINE

NEW LAKELINE PARK



THE BARTON
4 BED/3.5 BATH
2,278 SF

THE BRUSHY
3 BED/2.5 BATH
2,008 SF

THE TRAVIS
4 BED/3.5 BATH
2,278 SF

- PRIVACY FENCE OPTION
- OPEN ROOF DECK
- UNDER CONTRACT



PARK PLACE

AT LAKELINE

THE BARTON

4 BED / 3.5 BATH

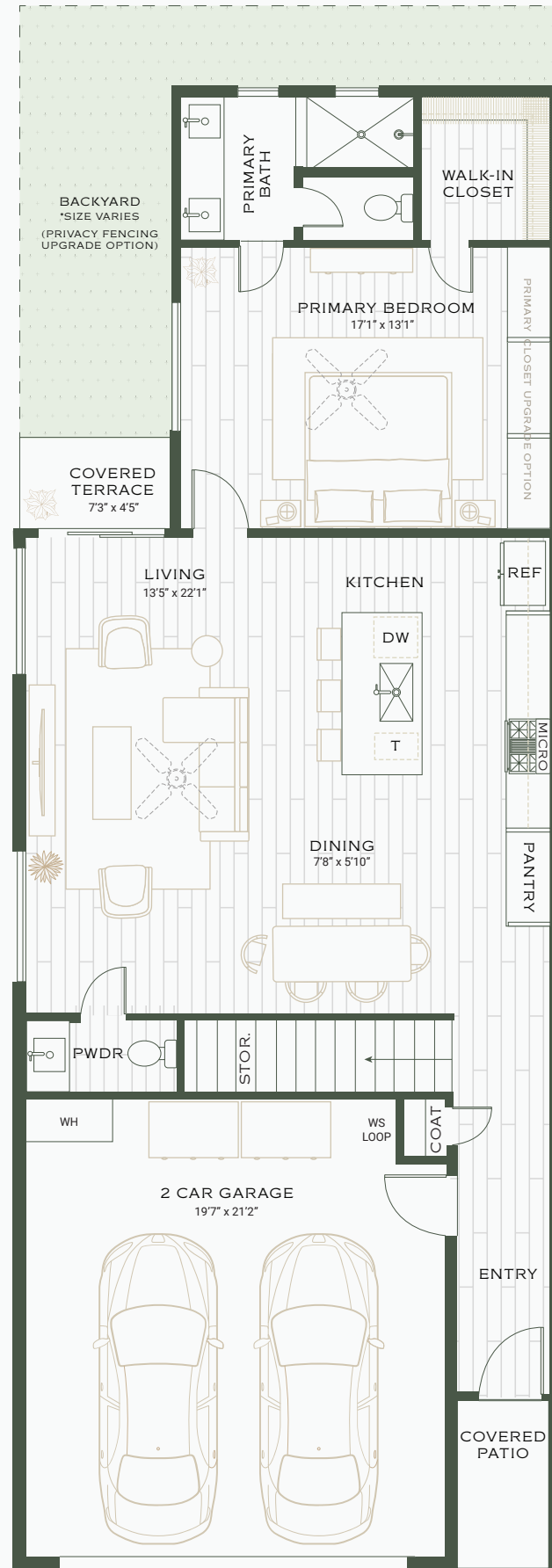
INTERIOR SF: 2,278



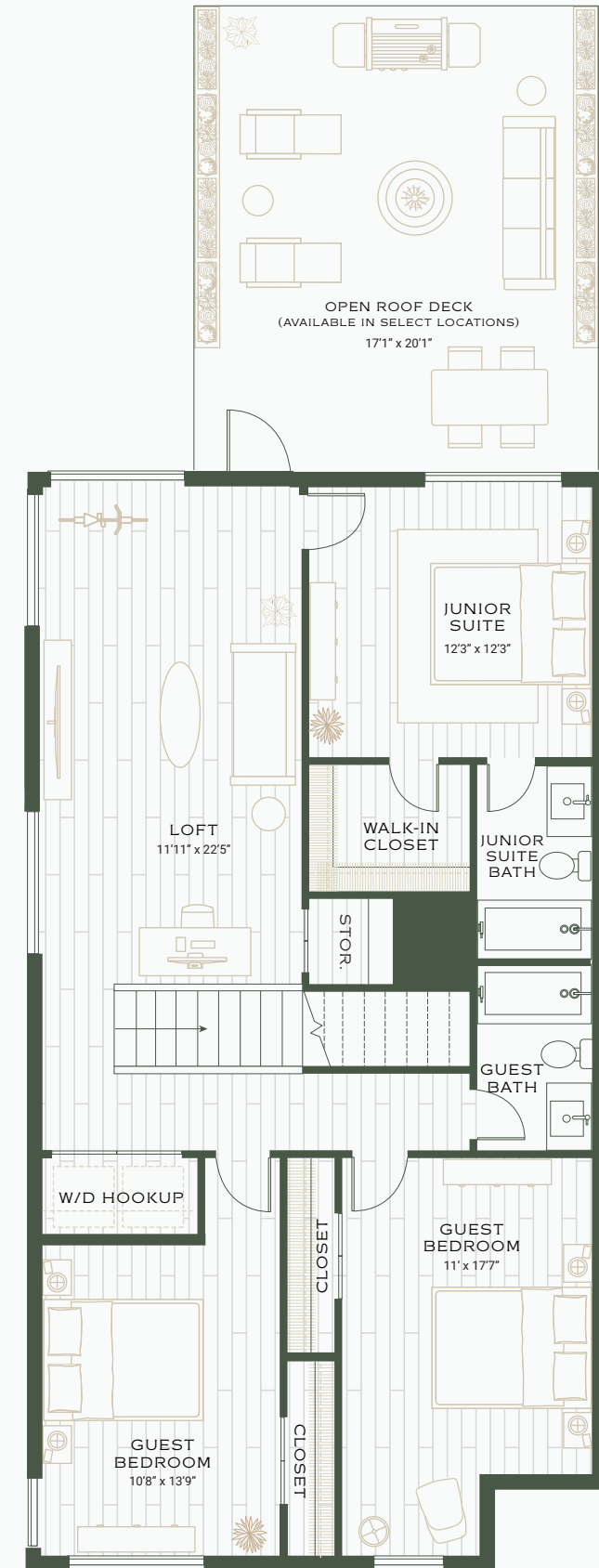
COMPASS DMG

***SELECT LOCATIONS**

Park Place at Lakeline & PrimeHaven Homes reserves the right to make modifications and changes to the information contained herein. Price and availability subject to change. Renderings, photos, and sketches are representational and may not be completely accurate. Dimensions, sizes, specifications, layouts, views, and materials are approximate & subject to change without notice. 🏠



LEVEL ONE



LEVEL TWO



PARK PLACE

AT LAKELINE

AT LAKELINE

THE BRUSHY

3 BED / 2.5 BATH

INTERIOR SF: 2,008

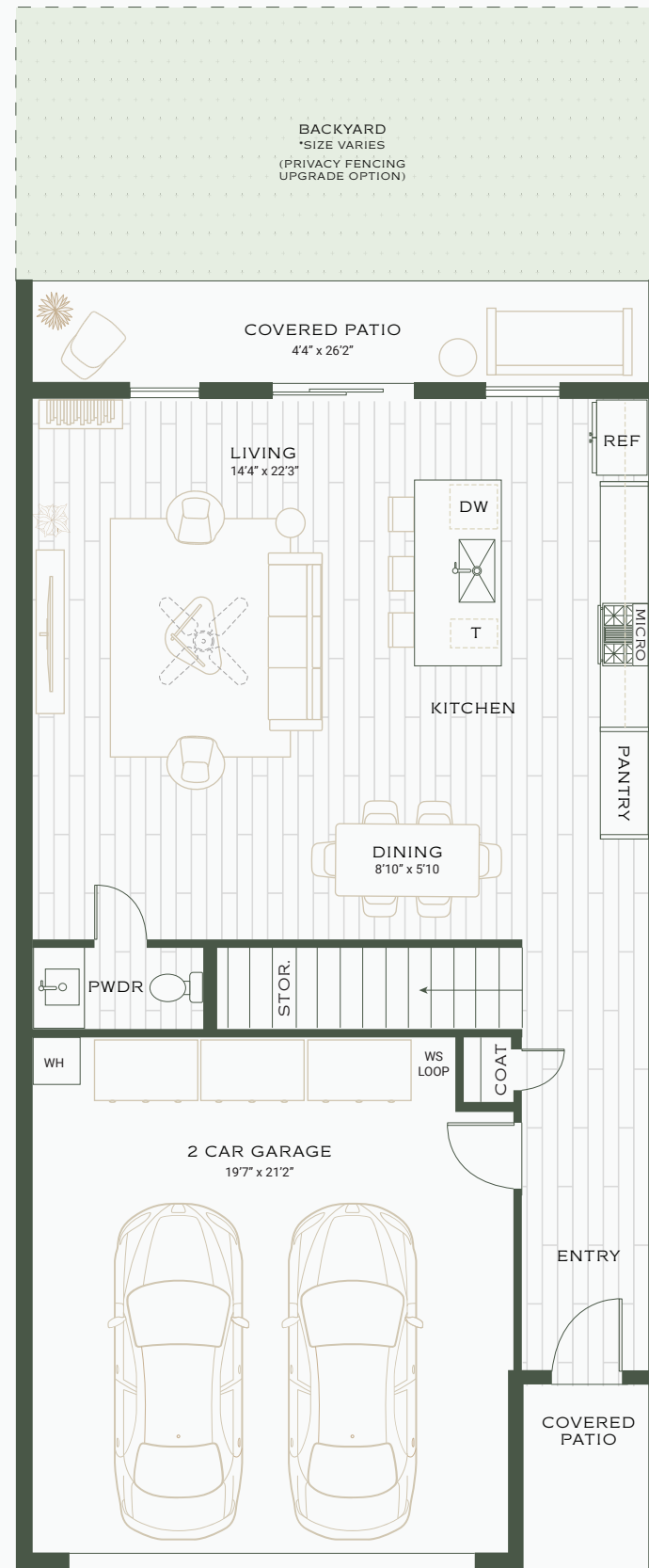
TERRACE SF*: 113

PH
PRIMEHAVEN HOMES

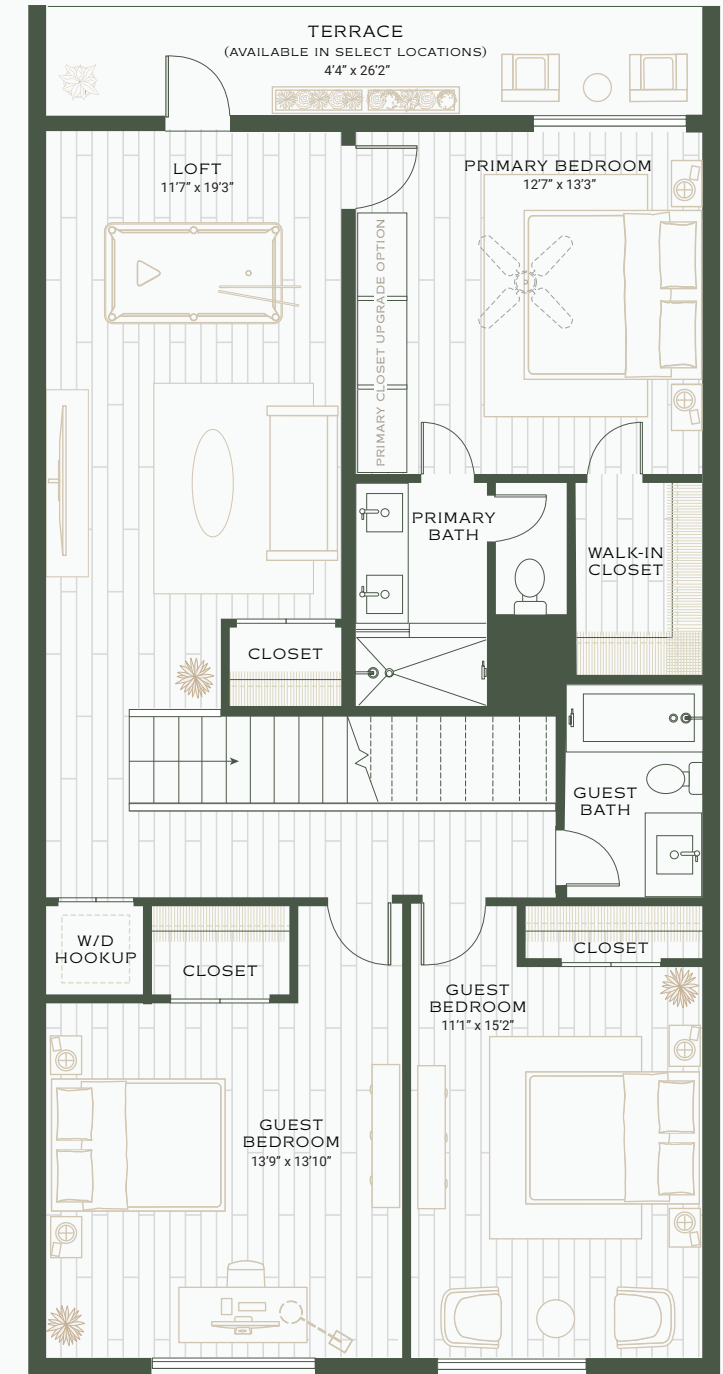
COMPASS DMG

***SELECT LOCATIONS**

Park Place at Lakeline & PrimeHaven Homes reserves the right to make modifications and changes to the information contained herein. Price and availability subject to change. Renderings, photos, and sketches are representational and may not be completely accurate. Dimensions, sizes, specifications, layouts, views, and materials are approximate & subject to change without notice. 🏠



LEVEL ONE



LEVEL TWO


PARK PLACE
 AT LAKELINE

THE TRAVIS

4 BED / 3.5 BATH

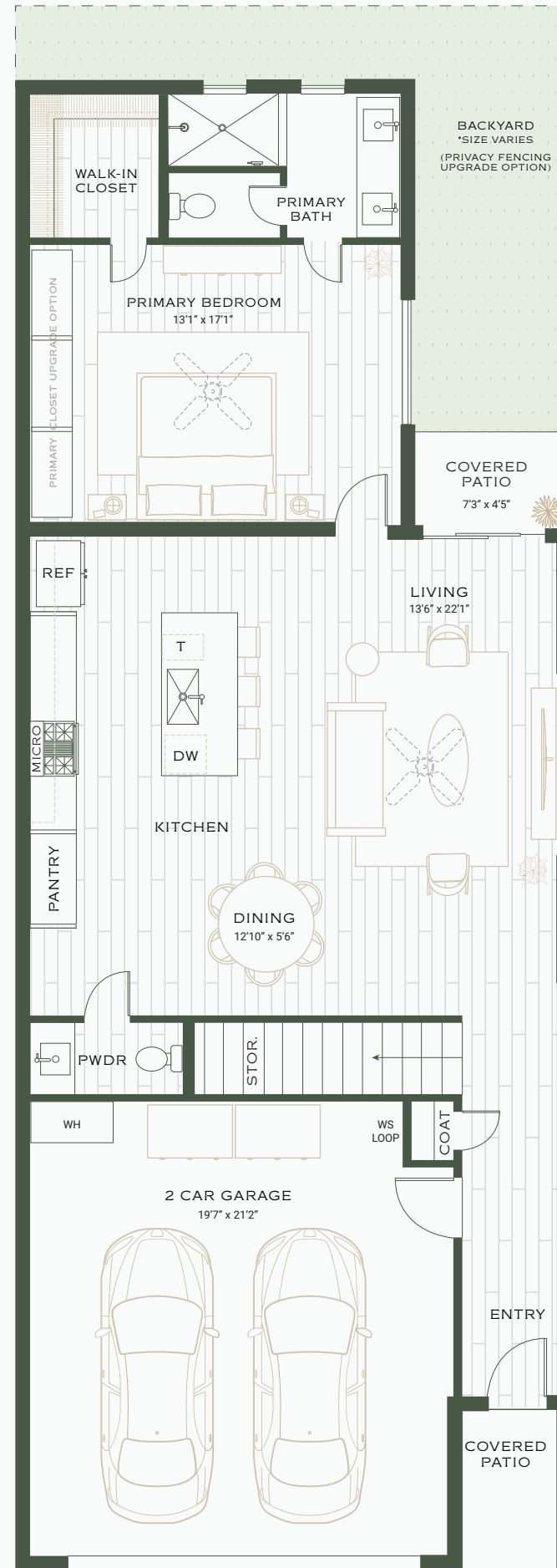
INTERIOR SF: 2,278



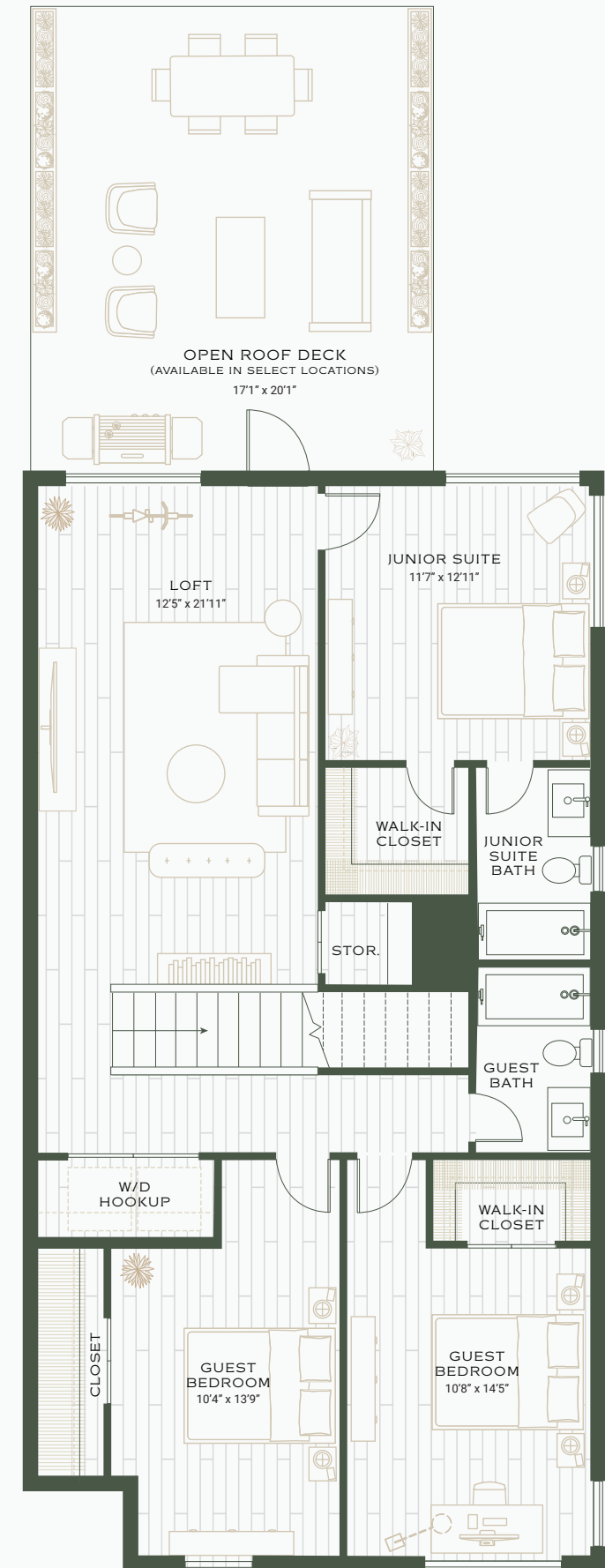
COMPASS DMG

***SELECT LOCATIONS**

Park Place at Lakeline & PrimeHaven Homes reserves the right to make modifications and changes to the information contained herein. Price and availability subject to change. Renderings, photos, and sketches are representational and may not be completely accurate. Dimensions, sizes, specifications, layouts, views, and materials are approximate & subject to change without notice. 🏠



LEVEL ONE



LEVEL TWO



OPEN LOFTS ONLY LIMITED BY YOUR IMAGINATION

Every floor plan at Park Place features an open loft left for your imagination. Use this space to watch your favorite movie, play a game of poker, or even unwind at the end of a busy day. Park Place residents will be able to fully customize Lighting, Shades, and Audio-Visual Systems in their exclusive home. The basic pre-wire package that comes with your home at Park Place includes basic internet and cable, one data cable, and one TV cable. The enhanced pre-wire package offers you the ability to fully customize additional upgrades for your home.

- PREWIRE
- LIGHTING DESIGN
- LIGHTING CONTROL
- SHADES
- AV DISTRIBUTION
- AUTOMATION
- CLIMATE CONTROL
- SECURITY
- NETWORK
- HOME ENTERTAINMENT



KICHLER

Kichler Lighting has been shedding light on what's important since 1938 by creating dependable, high-quality fixtures for all. With careful design and innovation in mind, Kichler products glow in every home.



DELTA.

Delta products are designed with the human experience in mind to transform the way people experience water every day. That means creating fixtures that are not only beautifully designed, but also engineered with the latest innovations to make kitchen tasks easier.



GE Appliances has been a trusted name, synonymous with quality and reliability. Their legacy of invention has modernized homes for the past century and has given owners lasting memories.

HIGH-END FINISHES FOR HIGH-END LIVING

Park Place at Lakeline offers distinct details and high-end finishes designed for timeless urban living. The PrimeHaven Development Team has spent countless hours designing and re-designing every detail down to the grout color. From rearranging door openings to window dimensions, we are proud to build a product with our logo on it. Each future homeowner will get the chance to visualize and feel material samples in our designer-curated Discovery Boxes.

We are excited to bring the following to each Park Place residence:

- ANDERSEN 100 SERIES WINDOWS
- 10' FIRST-FLOOR CEILING HEIGHTS
- LUXURY VINYL PLANK FLOORING
- QUARTZ COUNTERTOPS
- EUROPEAN-INSPIRED CABINETRY
- KICHLER LIGHTING
- GE APPLIANCES
- DELTA FAUCETS
- SCHLAGE HARDWARE
- ELECTRIC VEHICLE READY GARAGES



DEVELOPED BY


PH
PRIMEHAVEN HOMES

BUILT BY

PD
PRIMEHAVEN DEVELOPMENT

PARKPLACELAKELINE.COM | 512 772 2880

590-595 OLD MILL ROAD, CEDAR PARK, TEXAS 78613

MARKETING BY **COMPASS DMG** 

Compass Development Marketing Group is a licensed real estate broker and abides by Equal Housing Opportunity laws. All material presented herein is intended for informational purposes only. Information is compiled from sources deemed reliable but is subject to errors, omissions, changes in price, condition, sale, or withdrawal without notice. Photos may be virtually staged or digitally enhanced and may not reflect actual property conditions.